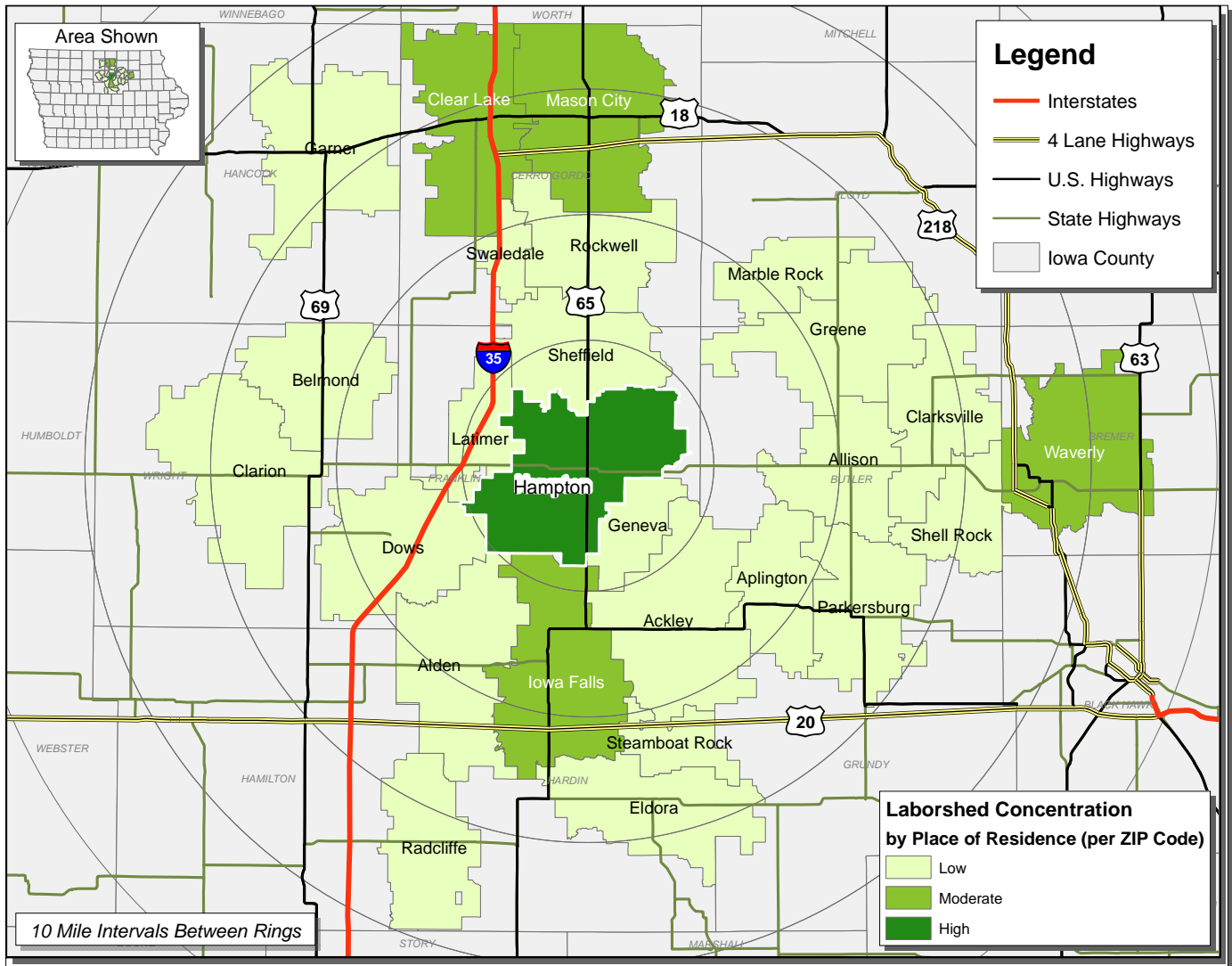




EDUCATION

FRANKLIN COUNTY, IOWA LABORSHED AREA

Concentration of those with transferable experience/skills by place of residence



Workers who have transferable experience/skills in the industry are currently commuting an average of 9 miles one way for work. Those who are willing to change/accept employment are willing to commute an average of 25 miles one way for the right employment opportunity.

For More Information Regarding the Franklin County Laborshed, contact:

Franklin County Development Association

Karen L. Mitchell, Director

5 1st St. S.W.

Hampton, Iowa 50441

Phone: 641-456-5668

Fax: 641-456-5660

Email: fcda_director@mchsi.com

www.franklincountyiowa.com

LABOR CHARACTERISTICS

EDUCATION

Estimated Potential Available Labor Per Occupational Category:

Administration:

- Administrators - 1,951
- Management & Supervisors - 3,712
- Accountants and Auditors - 139
- Business Operations Specialists - 279

Faculty:

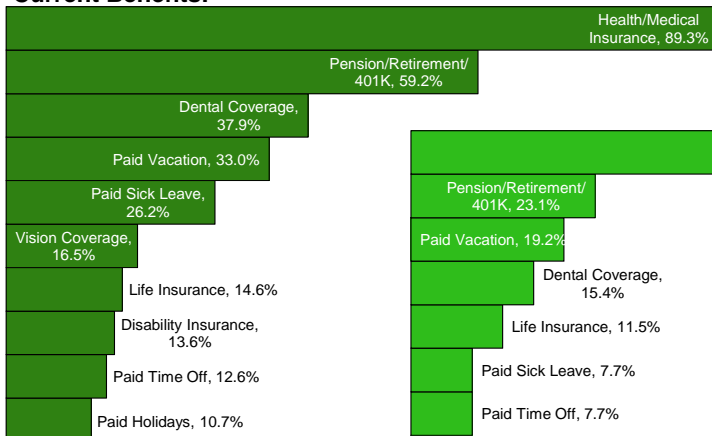
- Elementary School Teachers - 282
- Postsecondary Teachers - 558
- Preschool Teachers - 138
- Secondary School Teachers - 142
- Special Education Teachers - 279
- Teacher Assistants - 837
- Teachers and Instructors, All Other - 2,780

Staff:

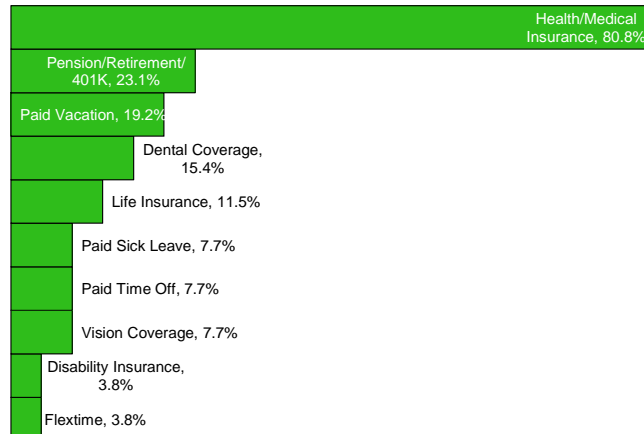
- Accounting, and Auditing Clerks - 976
- Automotive Service Technicians and Mechanics - 137
- Child Care Workers - 283
- Computer Occupations, All Other - 287
- Computer User Support Specialists - 282
- Cooks - 1,115
- Customer Service Representatives - 135
- Data Entry Keyers - 285
- Dietetic Technicians - 279
- Dietitians and Nutritionists - 148
- Electricians - 131
- Food Preparation Workers - 414
- Graphic Designers - 135
- Installation, Maintenance, and Repair Workers, All Other - 558
- Janitors and Cleaners - 281
- Maids and Housekeeping Cleaners - 290
- Maintenance and Repair Workers, General - 697
- Office and Administrative Support Workers, All Other - 426
- Office Clerks, General - 410
- Public Relations Specialists - 139
- Receptionists and Information Clerks - 418
- Registered Nurses - 2,790
- Secretaries - 1,255
- Social Workers - 280

An estimated total of
23,248 people in the Laborshed area

Current Benefits:

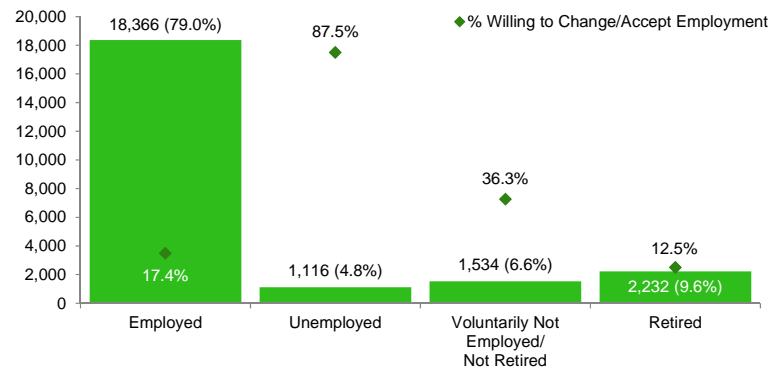


Desired Benefits:



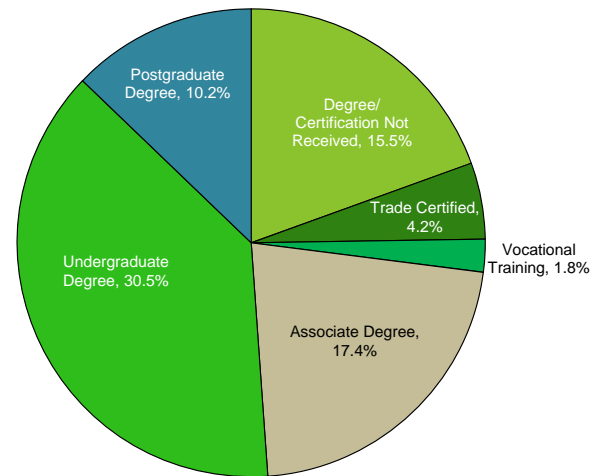
Information compiled by Iowa Workforce Development using Laborshed data released 2014.

Estimated Total by Employment Status (percentage):



Educational Level:

(79.6% Have an education beyond high school)



Workplace Flexibility:

(by percent of interest)

- Job teams - 77.8%
- Cross-training - 58.3%
- Job sharing - 41.7%
- Varied shifts - 33.3%
- Temporary work - 50.0%
- Seasonal work - 47.2%

Additional Facts:

- 56.3% paid an hourly wage
- 66.5% are/were employed full-time
- 22.8% are/were employed part-time
- 6.6% are/were self-employed
- 13.6% hold two or more jobs
- Currently working an average of 40 hours/week

Underemployment (estimated):

Total Underemployment - 3.6% (177)

- Low hours - 1.2% (59)
- Mismatch of skills - 3.0% (148)
- Low income - 0.6% (30)

IWD only counts individuals once when estimating Total Underemployment.

Top Advertising Media:

(for those seeking employment opportunities by use)

- Internet - 73.7%
 - www.monster.com
 - www.usreap.net
 - www.teachiowa.gov
- Local/Regional Newspapers - 46.0%
 - Globe Gazette - Mason City
 - Hampton Chronicle
 - The Des Moines Register
- Networking through friends, family or acquaintances - 23.0%
- IowaWORKS Centers - 15.8%

LABOR CHARACTERISTICS

EDUCATION

Occupation	Occupational Code	Mean Wage	Entry Wage	Experienced Wage	Median Wage
Accountants and Auditors	13-2011	\$ 29.12	\$ 18.77	\$ 34.30	\$ 26.63
Administrative Services Managers	11-3011	\$ 29.58	\$ 19.31	\$ 34.72	\$ 27.50
Automotive Service Technicians and Mechanics	49-3023	\$ 14.87	\$ 10.04	\$ 17.29	\$ 14.53
Bookkeeping, Accounting, and Auditing Clerks	43-3031	\$ 14.54	\$ 10.42	\$ 16.60	\$ 14.07
Bus and Truck Mechanics and Diesel Engine Specialists	49-3031	\$ 17.44	\$ 13.12	\$ 19.59	\$ 17.12
Bus Drivers, School or Special Client	53-3022	\$ 14.89	\$ 9.47	\$ 17.60	\$ 14.01
Business Operations Specialists, All Other	13-1199	\$ 25.91	\$ 14.09	\$ 31.82	\$ 22.99
Child Care Workers	39-9011	\$ 8.40	\$ 8.02	\$ 8.58	\$ 8.54
Child, Family, and School Social Workers	21-1021	\$ 18.25	\$ 11.86	\$ 21.45	\$ 14.74
Computer and Information Systems Managers	11-3021	\$ 46.85	\$ 31.82	\$ 54.37	\$ 46.15
Computer User Support Specialists	15-1151	\$ 18.07	\$ 11.79	\$ 21.22	\$ 17.06
Cooks, Institution and Cafeteria	35-2012	\$ 10.82	\$ 9.20	\$ 11.63	\$ 10.65
Customer Service Representatives	43-4051	\$ 15.40	\$ 10.20	\$ 18.00	\$ 15.00
Data Entry Keyers	43-9021	\$ 13.65	\$ 11.72	\$ 14.61	\$ 13.37
Dietitians and Nutritionists	29-1031	\$ 26.06	\$ 19.91	\$ 29.14	\$ 25.49
Education Administrators, Postsecondary	11-9033	\$ 34.54	\$ 24.78	\$ 39.43	\$ 32.92
Educational, Guidance, School, and Vocational Counselors	21-1012	\$ 25.08	\$ 18.76	\$ 28.24	\$ 25.07
Electricians	47-2111	\$ 18.70	\$ 13.50	\$ 21.30	\$ 18.90
Executive Secretaries and Administrative Assistants	43-6011	\$ 17.77	\$ 11.33	\$ 20.99	\$ 16.87
Financial Managers, Branch or Department	11-3031	\$ 43.81	\$ 28.09	\$ 51.67	\$ 42.47
First-Line Supervisors/Managers of Food Preparation and Serving Workers	35-1012	\$ 11.87	\$ 8.04	\$ 13.79	\$ 11.37
First-Line Supervisors/Managers of Office and Administrative Support Workers	43-1011	\$ 21.72	\$ 15.26	\$ 24.95	\$ 21.25
Food Preparation Workers	35-2021	\$ 10.57	\$ 8.28	\$ 11.71	\$ 10.55
Food Servers, Nonrestaurant	35-3041	\$ 9.71	\$ 8.01	\$ 10.56	\$ 9.51
Food Service Managers	11-9051	\$ 21.00	\$ 12.13	\$ 25.44	\$ 16.44
Graphic Designers	27-1024	\$ 14.99	\$ 12.05	\$ 16.46	\$ 14.57
Health Educators	21-1091	\$ 21.71	\$ 13.58	\$ 25.77	\$ 23.64
Human Resources Managers	11-3121	\$ 29.97	\$ 20.83	\$ 34.55	\$ 24.66
Installation, Maintenance, and Repair Workers, All Other	49-9099	\$ 18.92	\$ 13.18	\$ 21.79	\$ 17.32
Instructional Coordinators	25-9031	\$ 28.63	\$ 19.75	\$ 33.07	\$ 28.92
Janitors and Cleaners, Except Maids and Housekeeping Cleaners	37-2011	\$ 12.19	\$ 8.80	\$ 13.88	\$ 11.46
Librarians	25-4021	\$ 17.47	\$ 12.49	\$ 19.96	\$ 14.72
Library Technicians	25-4031	\$ 10.36	\$ 8.27	\$ 11.41	\$ 10.28
Maids and Housekeeping Cleaners	37-2012	\$ 10.09	\$ 8.05	\$ 11.12	\$ 10.02
Maintenance and Repair Workers, General	49-9071	\$ 17.29	\$ 13.25	\$ 19.31	\$ 17.29
Managers, All Other	11-9199	\$ 37.12	\$ 18.25	\$ 46.56	\$ 34.20
Music Directors and Composers	27-2041	\$ 24.25	\$ 18.84	\$ 26.96	\$ 22.11
Office and Administrative Support Workers, All Other	43-9199	\$ 24.79	\$ 19.14	\$ 27.62	\$ 23.69
Office Clerks, General	43-9061	\$ 12.52	\$ 8.93	\$ 14.31	\$ 12.36
Preschool Teachers, Except Special Education	25-2011	\$ 11.41	\$ 9.12	\$ 12.55	\$ 10.50
Public Relations Specialists	27-3031	\$ 28.89	\$ 18.20	\$ 34.23	\$ 26.36
Receptionists and Information Clerks	43-4171	\$ 11.27	\$ 8.06	\$ 12.87	\$ 11.03
Registered Nurses	29-1141	\$ 24.85	\$ 18.46	\$ 28.05	\$ 24.35
Secretaries, Except Legal, Medical, and Executive	43-6014	\$ 13.42	\$ 9.47	\$ 15.40	\$ 12.84
Social and Community Service Managers	11-9151	\$ 24.64	\$ 15.21	\$ 29.35	\$ 22.61
Substitute Teachers	25-3098	\$ 12.76	\$ 10.45	\$ 13.92	\$ 12.97
Transportation, Storage, and Distribution Managers	11-3071	\$ 31.77	\$ 19.25	\$ 38.03	\$ 29.46

Occupation	Occupational Code	Mean Annual Salary	Entry Salary	Experienced Salary	Median Salary
Business Teachers, Postsecondary	25-1011	\$ 86,716	\$ 54,769	\$ 102,689	\$ 69,852
Coaches and Scouts	27-2022	\$ 23,018	\$ 16,883	\$ 26,086	\$ 18,700
Education Administrators, Elementary and Secondary School	11-9032	\$ 93,438	\$ 76,588	\$ 101,863	\$ 92,013
Education Teachers, Postsecondary	25-1081	\$ 67,500	\$ 53,941	\$ 74,279	\$ 59,942
Elementary School Teachers, Except Special Education	25-2021	\$ 45,848	\$ 32,181	\$ 52,682	\$ 46,049
Kindergarten Teachers, Except Special Education	25-2012	\$ 47,725	\$ 39,176	\$ 52,000	\$ 45,847
Special Education Teachers, Kindergarten and Elementary School	25-2052	\$ 47,908	\$ 40,742	\$ 51,491	\$ 46,603
Teacher Assistants	25-9041	\$ 20,213	\$ 16,741	\$ 21,948	\$ 20,300

The 2013 Iowa Wage data for Franklin County Laborshed area was produced by the Labor Force & Occupational Analysis Bureau to provide communities local information on wages by occupation. The source of the wage and employment data is based on the May 2012 OES estimates. Additional occupational wage and employment data can be found at <http://iwin.iwd.state.ia.us/iowa/OlmisZine>.